


**StrategyEngine**

Heuristic Investment Systems (HIS) provides decision support systems, front office portfolio management systems and investment strategy resources to the investment community.

**StrategyEngine . . . meeting the challenges of an investment business.**

How to distil and transform all the available data and formulate an investment strategy?

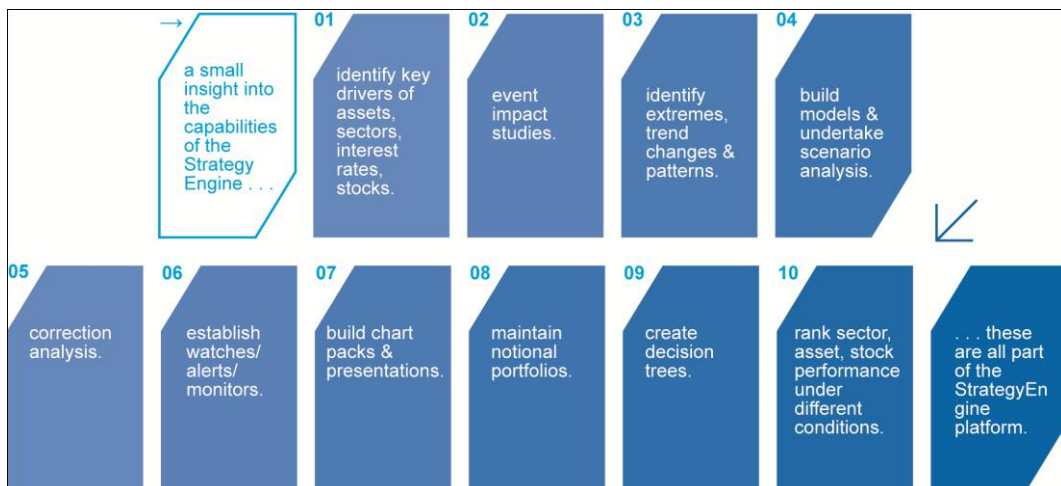
How to ensure investment intelligence is preserved, stays active and can be shared across the business or with clients?

How to generate efficiencies, robustness and consistency in investment and economic analysis?

StrategyEngine has been designed to meet these challenges.

This platform for developing and presenting investment strategies can be used by the investment manager, strategist, economist or analyst involved in equity strategy, asset allocation, fixed interest and economics. It facilitates sharing of information and ideas amongst investment professionals.

**Capabilities of the StrategyEngine**





The StrategyEngine provides the investment team an interactive and dynamic platform to undertake analysis and formulate investment strategy.

### Enhance the investment management process

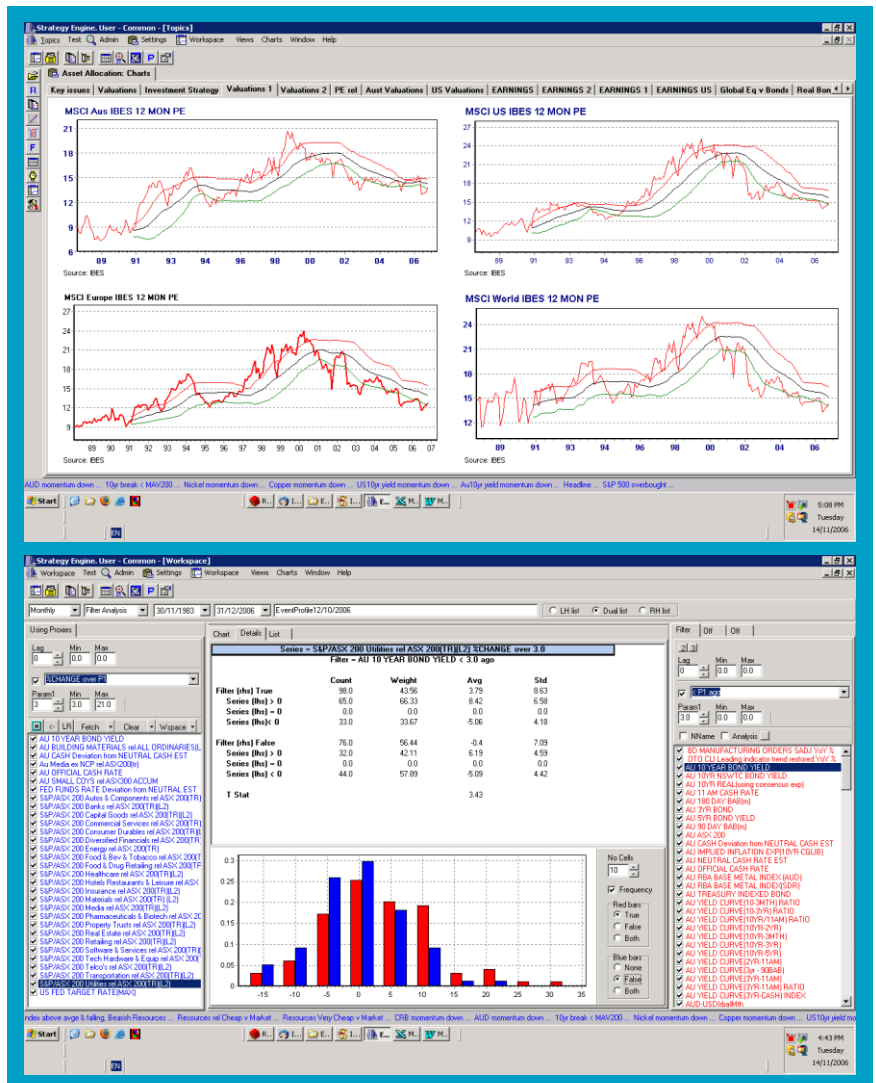
- Improve the consistency and robustness of your investment process through a range of analytical tools and methodologies (correlation analysis, model building, event analysis, filter analysis, regressions).
- Ensure important information continues to 'bubble' to the surface. Scan markets for change, extremes and be alerted to events and triggers for potential investment decisions.
- Applicable across all asset classes and securities (Strategic Asset Allocation, TAA, equity sectors, stocks, interest rates, economic analysis).

### Achieve efficiencies in managing data and undertaking analysis

- Analytical tools provide significant efficiency gains.
- Avoids the idiosyncratic and unstable features of spreadsheets.
- SE can become a central repository for all your economic and financial market information.
- Data easily updated from IRESS, spreadsheets, own proprietary data.
- Charts/models/tables updated continually as data is uploaded.
- Data and charts copied to Excel, Word.

### Share, preserve and distribute information

- Analysis, presentations, chartpacks accessible across the organisation
- Produce presentations, chartpacks for internal/external consumption.



Access to HIS's investment experience, StrategyEngine and resources via the Bureau Service.